

Water Works



Model M-WT - Compound Water Meter

A combination of 2 water meters - a large one, model WT, and a small one, model M-with a special change-over valve. This compound water meter can handle and measure accurately an extremely broad range of flow rates.

• Applications

The Compound Water Meter is designed for applications requiring accurate measurements in environments with large fluctuations in flow rates, such as factories, hotels, hospitals, apartment buildings, etc.

• Available Sizes

2" x 1/2", 3" x 3/4", 4" x 3/4", 6" x 1 1/4"

Features:

- Accurate measurement over broad range of flow rates
- Simple maintenance
- Field replaceable measuring units
- Hermetically sealed magnetic registers
- Optional electric output: EV and EF (volume & flow rate respectively) or DIALOG (see relevant leaflet)
- Dials include central "star" for easy leak detection

Technical Specifications

Maximum Working Pressure	Standard - 16 bar
Maximum Working Temperature	50° C
Body	Polyester coated WT meter - cast iron, M meter - copper alloy
Flanges	ISO, BS, ANSI 150 (other - optional)



M-WT type dial

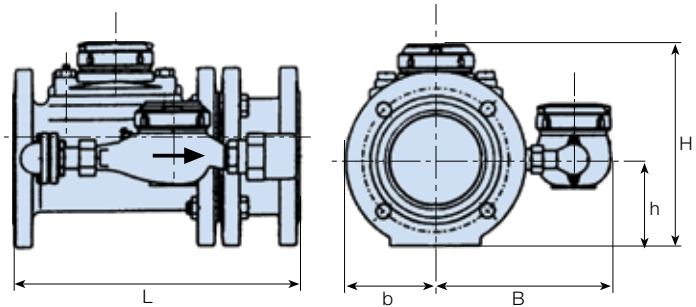


M type dial

Model M-WT - Compound Water Meter

Dimensions

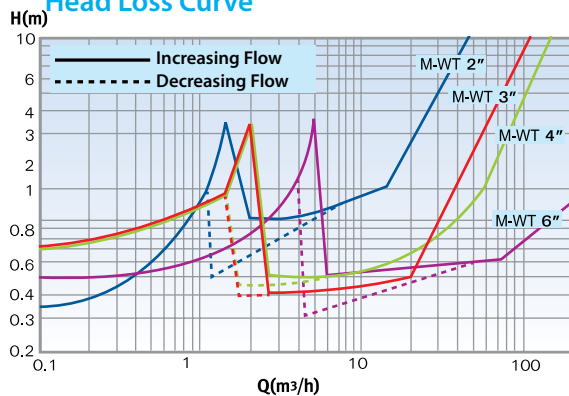
Model		M-WT			
Nominal size	(mm)	50	80	100	150
	(inch)	2	3	4	6
L - Length With Connections (mm)		270	330	350	495
H - Height (mm)		214	234	250	310
h - Height (mm)		70	90	106	130
B - Width (mm)		200	220	220	290
b - Width (mm)		100	100	100	145
Weight (kg)		17	23	34	63



Performance data:

Model M-WT			Q _{max} Maximum flowrate (m ³ /h)	Q _n Nominal Flowrate (m ³ /h)	Change-over valve: opening flowrate (m ³ /h)	Change-over valve: Closing flowrate (m ³ /h)	Q _t Transitional Flowrate (m ³ /h)	Q _{min} Minimum Flowrate (m ³ /h)	Starting Flow (l/h)	Maximum register capacity (m ³)	Accuracy between Q _{max} & Q _t	Accuracy between Q _t & Q _{min}
Nominal size												
WT (mm)	WT (inch)	M (inch)										
50	2	½	65	40	1.5	1.2	0.12	0.03	11	10 ⁶	±2%	±5%
80	3	¾	110	75	2	1.6	0.2	0.05	17	10 ⁶		
100	4	¾	200	100	2	1.6	0.2	0.05	17	10 ⁷		
150	6	1¼	410	260	5	4.5	0.48	0.12	23	10 ⁷		

Head Loss Curve



Installation Requirements

- The water meter should be installed in horizontal position.
- The meter shall be full of water while operating.
- Prior to installation of a meter, the pipeline shall be thoroughly flushed.
- Straight pipe section of the same diameter D as the meter, having length of 10D and 5D shall be installed upstream and downstream of the meter respectively.