



## Fire Service Water Meter Model FSM

A compound water meter with an extremely wide flow range, including a built-in strainer, a stone trap and a diverter valve.

At low flows only the secondary, small by-pass water meter functions. When the flow rate increases, the diverter valve turns from fully-closed to fully-open position and the main meter starts functioning as well.

### Features:

- Field serviceable strainer, stone trap and diverter valve
- Field replaceable measuring units
- Hermetically sealed magnetic registers
- Optional - all versions of ARAD electrical outputs

### Applications

To be installed in water supply lines where the use of such meters are dictated by authorities or recommended by designers.

The FSM enables accurate measuring of normal consumption within a wide range of flowrates, including excessively high flow rates in case of fire with low loss of head.

### Available Sizes

4" x 1", 6" x 1 1/2", 8" x 2"

### Standards

American FM standard approved

### Technical Specifications

<b>Maximum Working Pressure</b>	12 bar
<b>Maximum Liquid Temperature</b>	50°C
<b>Bodies</b>	Strainer - Polyester coated steel. Meter & change over valve - cast iron.
<b>Flanges</b>	ISO, BS, AWWA (other - optional)



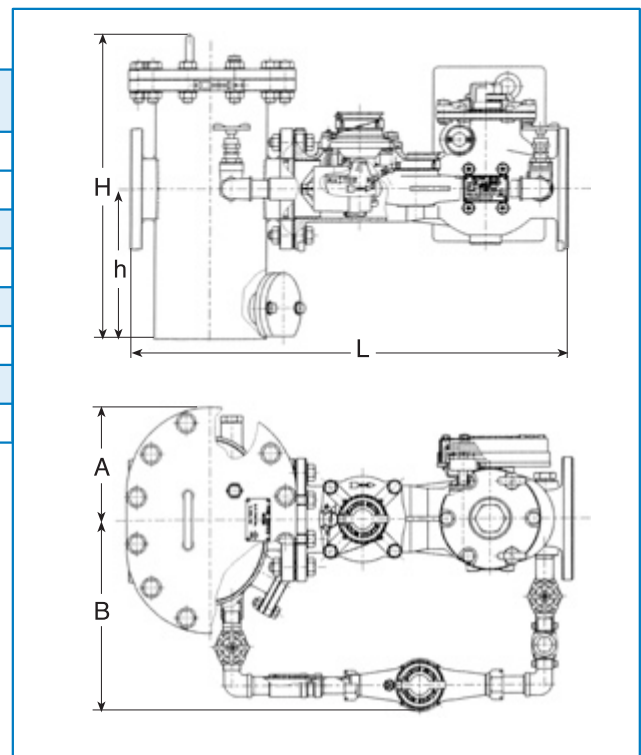
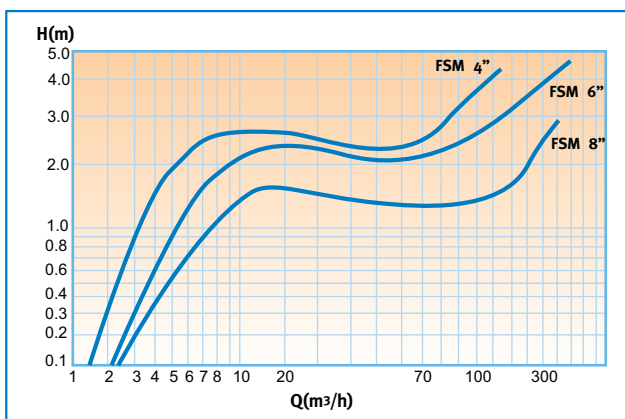
FSM type dial

**Performance data:**

Model FSM				Qmax Maximum flowrate (m <sup>3</sup> /h)	Qn Nominal Flowrate (m <sup>3</sup> /h)	Qt Transitl Flowrate (m <sup>3</sup> /h)	Qmin Minimum Flowrate (m <sup>3</sup> /h)	Starting Flow (m <sup>3</sup> /h)	Maximum register capacity (m <sup>3</sup> )	Accuracy between Qmax & Qt	Accuracy between Qt & Qmin
Nominal Size											
mm	inch	mm	inch								
100	4	25	1	143	120	0.17	0.08	3.6	10 <sup>7</sup>	±2%	±5%
150	6	40	1½	318	290	0.34	0.16	3.9	10 <sup>7</sup>		
200	8	50	2	545	480	0.45	0.30	8.2	10 <sup>8</sup>		

**Dimensions**

Model		FSM		
Nominal size	(mm)	100	150	200
	(inch)	4	6	8
L – Length (mm)		837	1142	1346
H – Height (mm)		576	726	788
h – Height (mm)		292	355	400
B – Width (mm)		340	460	562
A- Width (mm)		211	248	335
Weight (kg)		123	297	384

**Head Loss Curve****Installation Requirements**

- The water meter should be installed in horizontal position.
- The meter shall be full of water while operating.
- Prior to installation of a meter, the pipeline shall be thoroughly flushed.
- Straight pipe section of the same diameter D as the meter, having length of 10D and 5D shall be installed upstream and downstream of the meter respectively.